

# AirlineApps.com Summary

## AirlineApps.com Summary

<b>Model (Manuf.):</b> PA28R-200 () <b>Description:</b> <b>Class:</b> Single-Engine Land <b>Rating Cat:</b> Airplane <b>A/C Cat:</b> Normal <b>Engines:</b> 1 <b>Power:</b> Piston Aircraft <b>Propulsion:</b> <b>Weight:</b> <b>Gear:</b> <b>PIC Time:</b> 41 <b>Instructor Time:</b> 11 <b>SIC Time:</b> <b>Dual/Stud Time:</b> 12 <b>Date Last Flown</b> 4/28/2002 <b>Time</b> 63 <b>Requires Type Rating?</b> <input type="checkbox"/> <b>Typed in this A/C?</b> <input type="checkbox"/>	<b>Model (Manuf.):</b> LA4-200 sea () <b>Description:</b> <b>Class:</b> Single-Engine Sea <b>Rating Cat:</b> Airplane <b>A/C Cat:</b> Normal <b>Engines:</b> 1 <b>Power:</b> Piston Aircraft <b>Propulsion:</b> <b>Weight:</b> <b>Gear:</b> <b>PIC Time:</b> 19 <b>Instructor Time:</b> 11 <b>SIC Time:</b> <b>Dual/Stud Time:</b> 12 <b>Date Last Flown</b> 8/31/1986 <b>Time</b> 47 <b>Requires Type Rating?</b> <input type="checkbox"/> <b>Typed in this A/C?</b> <input type="checkbox"/>	<b>Model (Manuf.):</b> AA-5 () <b>Description:</b> <b>Class:</b> Single-Engine Land <b>Rating Cat:</b> Airplane <b>A/C Cat:</b> Normal <b>Engines:</b> 1 <b>Power:</b> Piston Aircraft <b>Propulsion:</b> <b>Weight:</b> <b>Gear:</b> <b>PIC Time:</b> 34 <b>Instructor Time:</b> <b>SIC Time:</b> <b>Dual/Stud Time:</b> 2 <b>Date Last Flown</b> 8/22/2008 <b>Time</b> 39 <b>Requires Type Rating?</b> <input type="checkbox"/> <b>Typed in this A/C?</b> <input type="checkbox"/>	<b>Model (Manuf.):</b> 1 <b>Description:</b> 1 <b>Class:</b> 5 <b>Rating Cat:</b> A <b>A/C Cat:</b> N <b>Engines:</b> 1 <b>Power:</b> F <b>Propulsion:</b> <b>Weight:</b> <b>Gear:</b> <b>PIC Time:</b> 6 <b>Instructor Time:</b> 2 <b>SIC Time:</b> <b>Dual/Stud Time:</b> 5 <b>Date Last Flown</b> 5 <b>Time</b> 3 <b>Requires Type Rating?</b> <b>Typed in this A/C?</b>
--	---	---	--

### Flight Time by Flight Conditions:

Category	Day	Night	Act Instrument	Sim Instrument	Cross Country	Total
Airplane:	4,837	426	199	181	3,124	5,263
Rotor:	69	10	0	0	15	79
Totals:	4,906	436	199	181	3,139	5,342

### Flight Time by Simulator:

PIC	Instructor	SIC	Dual/Stud	FE/Nav	Total
4	12	12	21		49

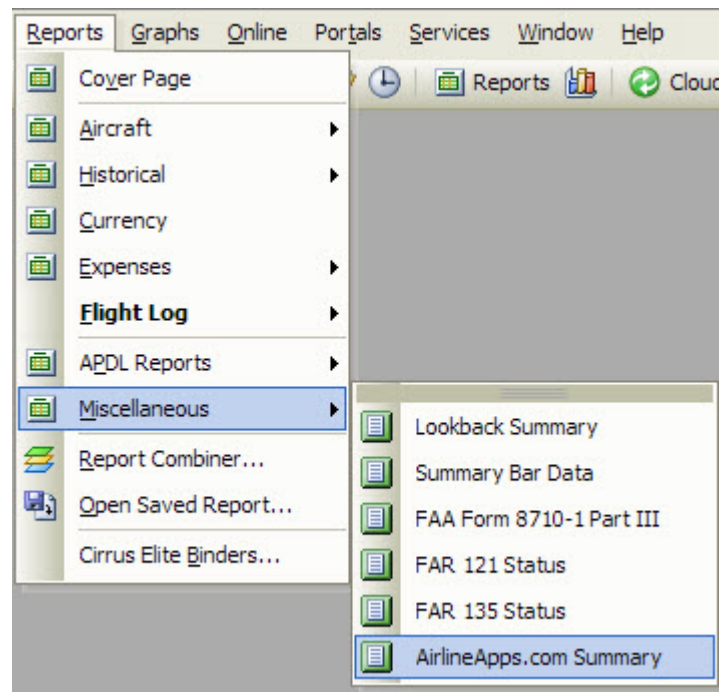
### Military Sorties Flown (Fixed Wing Only):

PIC	Instructor	SIC	Student	Navigator	Total
Turbine Powered		Multi Engine			

### Instrument Approaches:

within 6 months	within 12 months
1	1

The [AirlineApps.com](#) Summary Report is accessed from the Reports / Miscellaneous / [AirlineApps.com](#) Summary menu as shown below:



Accessing this report requires the Professional or Enterprise edition license. If you have the Standard Edition license you can upgrade your license by [clicking here](#). This report heavily depends on your Options / Aircraft configuration and will aid immensely in filling out the application details at [AirlineApps.com](#).