

# Analyzer Display Configuration

The [Analyzer](#) offers an abundant amount of information and sometimes not all the information displayed is required. Right-click to choose the Display Configuration option from the popup menu, or, choose the corresponding option from the settings icon on the Analyzer toolbar. A window will appear allowing you to uncheck any fields you do not want displayed. These columns will be subsequently hidden and can always be restored by following the same process.

Columns typically are automatically sized in width however can be sized manually by clicking and dragging the right edge of the column header. Data summaries can be viewed in either the raw totals (numeric format) or in a percentage of the grand total, for unlimited data analysis capabilities. Data can be easily ported directly into Microsoft Excel, if installed, for advanced graphing or data analysis.

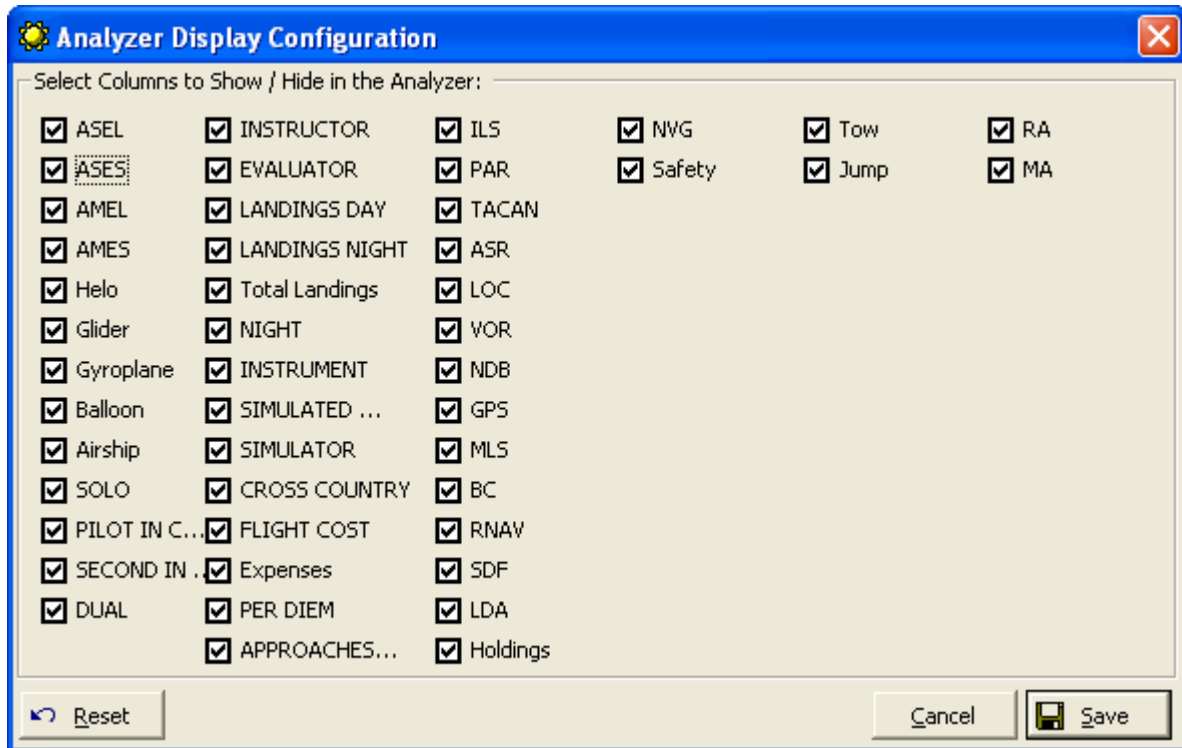


Figure 1. Analyzer Display Configuration