

Menus and Toolbars

This section of the help documentation will present an overview of the Menu and Toolbar system within Logbook Pro.

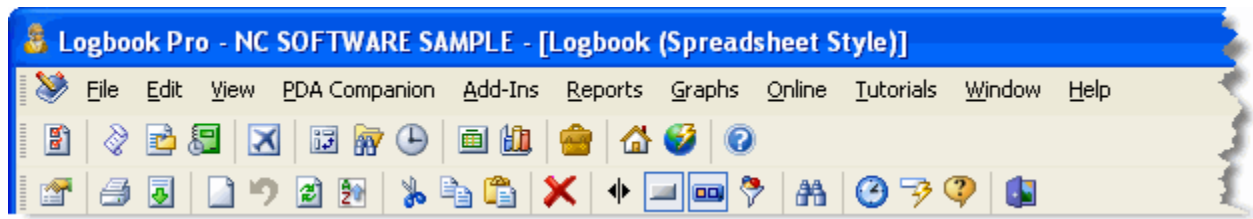


Figure 1. Menu / Toolbar / Sub-Toolbar

Figure 1 above shows an example of the main tools for navigating and manipulating Logbook Pro. The top section, the Menu, remains fixed throughout the software, however content on the drop down menus, i.e. when File is clicked, will change to reflect the active working area. The second section, the Main Toolbar will also remain fixed throughout the program. This is the main navigation control to jump from one area to another.

The third section in Figure 1 reflects what is referred to as a sub-toolbar. This toolbar will change to reflect options pertaining to the active area being used. The sub-toolbar above shows most of the common features across all sub-toolbars, however, there are some differences depending on the active area. Hover the mouse pointer over the small icons and a text description will appear guiding the user as to the purpose of the function.