

Currency Options

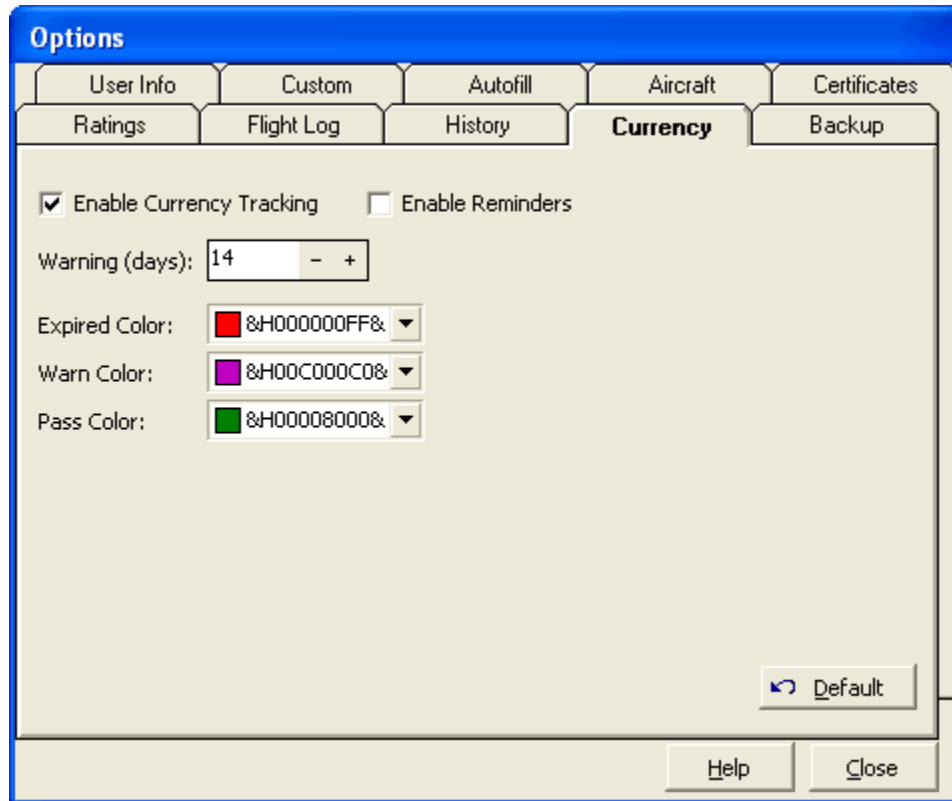


Figure 1. Currency Configuration

Enable Currency Tracking:

To maximize processing performance within Logbook Pro, disable the currency engine by unchecking the corresponding option. Currency analysis occurs immediately on program startup to generate currency reminders, if necessary. To disable this startup process, deselect this option. With currencies disabled, all currency functionality is turned off.

Enable Reminders:

At program startup, if currencies are enabled, a check currency expirations and history event expirations occurs. If any of these items are due to expire within the warning time frame (default of 14 days), a window will appear reminding you of the impending expiration. Once an item is expired, the reminder is disabled.

Warning (days):

Defines the number of days prior to begin the warning reminders at program startup, as described above, until the item expires. For example, of a Currency expires on 10/14/2001 and the current date is 10/5/2001, this is inside the 14 day prior window and a reminder notification will appear at program startup.

Warning (hours) (not shown):

For FAR 121/135 status reports, defines the number of hours prior to approaching a FAR limit at which the status will be indicated with a warning indicator.

Expired Color:

Defines the color coding used in the Explorer, Popup Currency Notifier, and Reports for expired currencies and items.

Warn Color:

Defines the color coding used in the Explorer, Popup Currency Notifier, and Reports for currencies and items that are about to expire, as defined by the warning time frame as described above.

Pass Color:

Defines the color coding used in the Explorer, Popup Currency Notifier, and Reports for currencies the are not expired and not within the warning time period, as described above.

When using the popup color dialog, select a desired color from the available color swatches. If a custom color is desired, right-click one of the white color swatches near the bottom and a color dialog will appear, allowing subsequent selection of this user-defined color.