

Getting Started

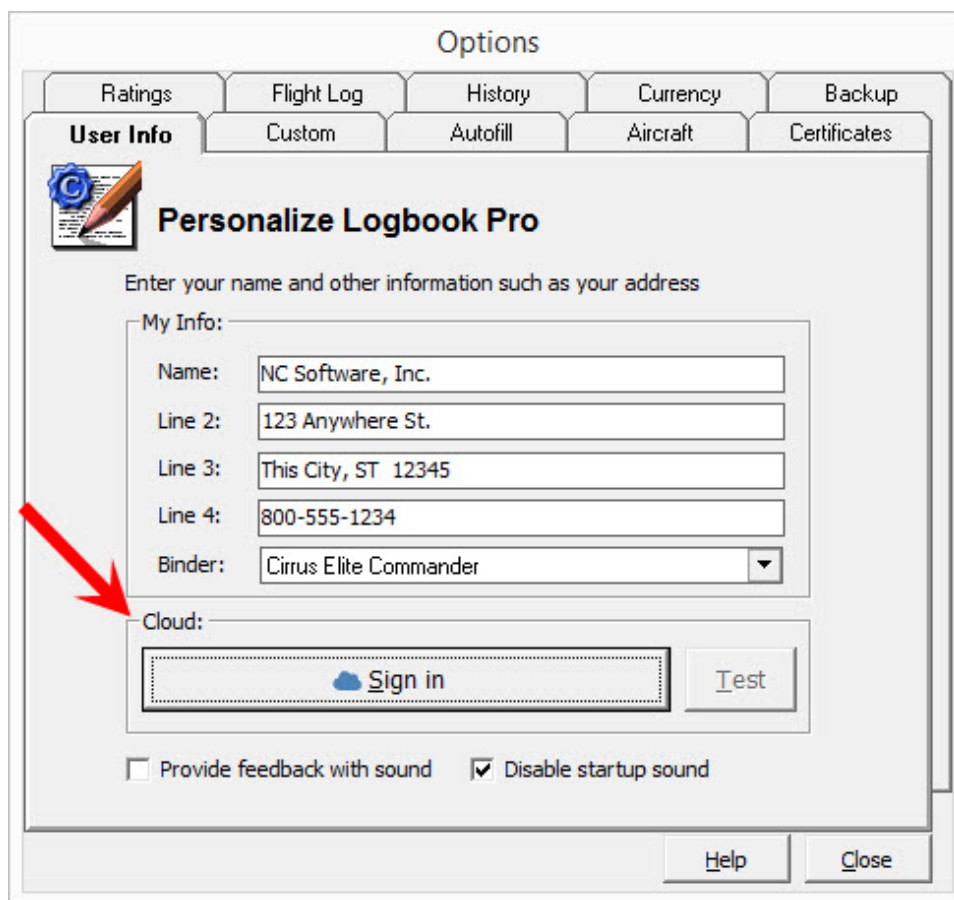
Overview

This guide will help you get up and running on your Logbook Pro Mobile equipped devices. Before you can use your mobile device you must link it to [Logbook Pro Desktop](#). If you don't have Logbook Pro Desktop installed [click here](#) to download and install it to Windows at this time. If you're using a Mac refer to [this article](#) for assistance.

Logbook Pro Desktop Initialization

Now that you have Logbook Pro Desktop installed and initially setup after first running it if you haven't already been using it you simply need to sync Logbook Pro Desktop to the cloud to upload your master configuration data and reports for your devices to pick up.


1. Connect Logbook Pro Desktop to the cloud either from the **View / Options / User Info** area or in the **Cloud Sync / Settings** area. Login with your NC Software web site account info which is the same login used on www.nc-software.com. If you don't have a NC Software account you can create one on the [right side of this web page](#).



Options

Ratings Flight Log History Currency Backup

User Info Custom Autofill Aircraft Certificates

 **Personalize Logbook Pro**

Enter your name and other information such as your address

My Info:

Name:

Line 2:

Line 3:

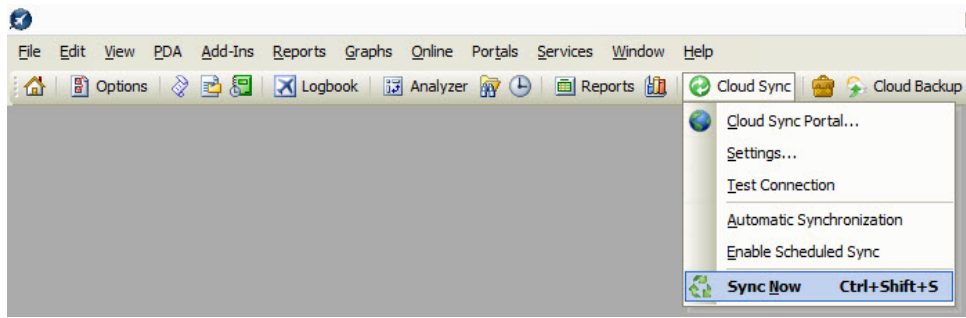
Line 4:

Binder:

Cloud:

☐ Provide feedback with sound ☒ Disable startup sound

2. Once you have signed in and connected Logbook Pro Desktop to the cloud on the toolbar find the Cloud Sync button and click **Cloud Sync / Sync Now**.

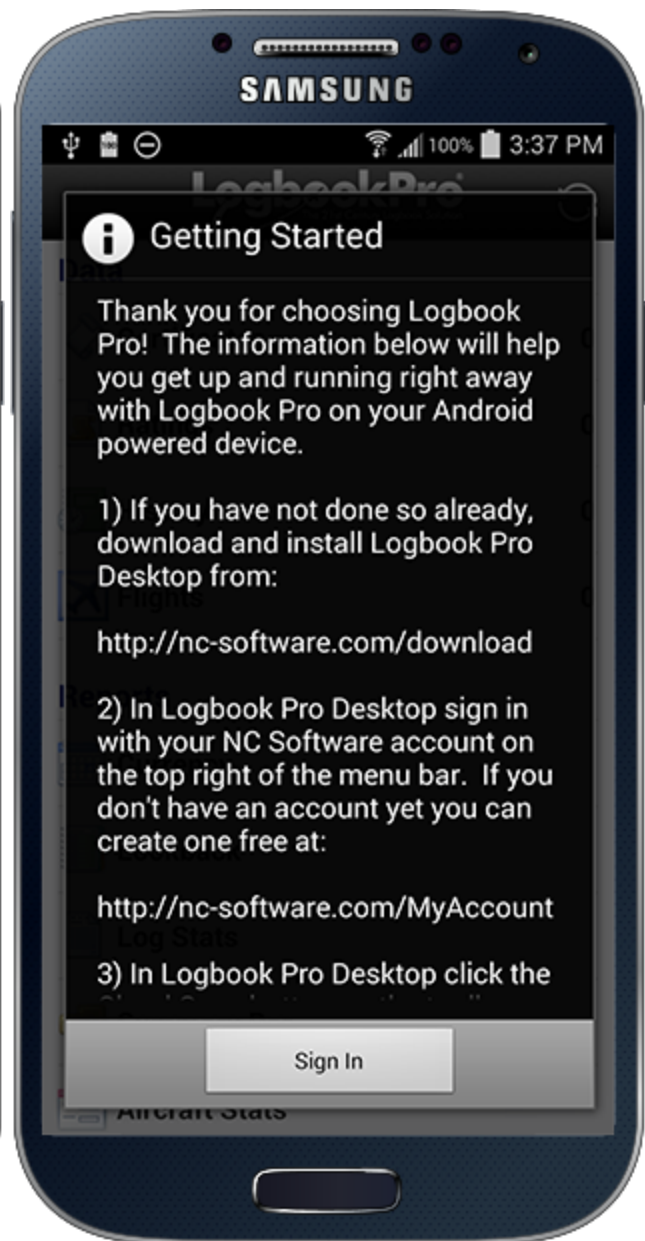
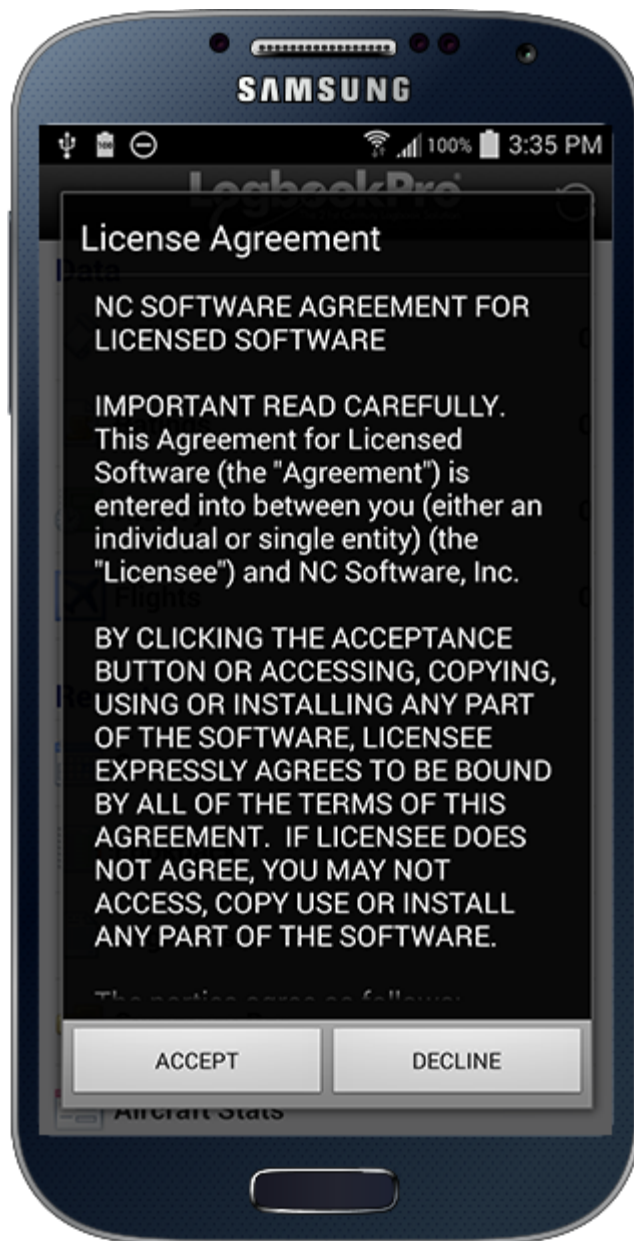


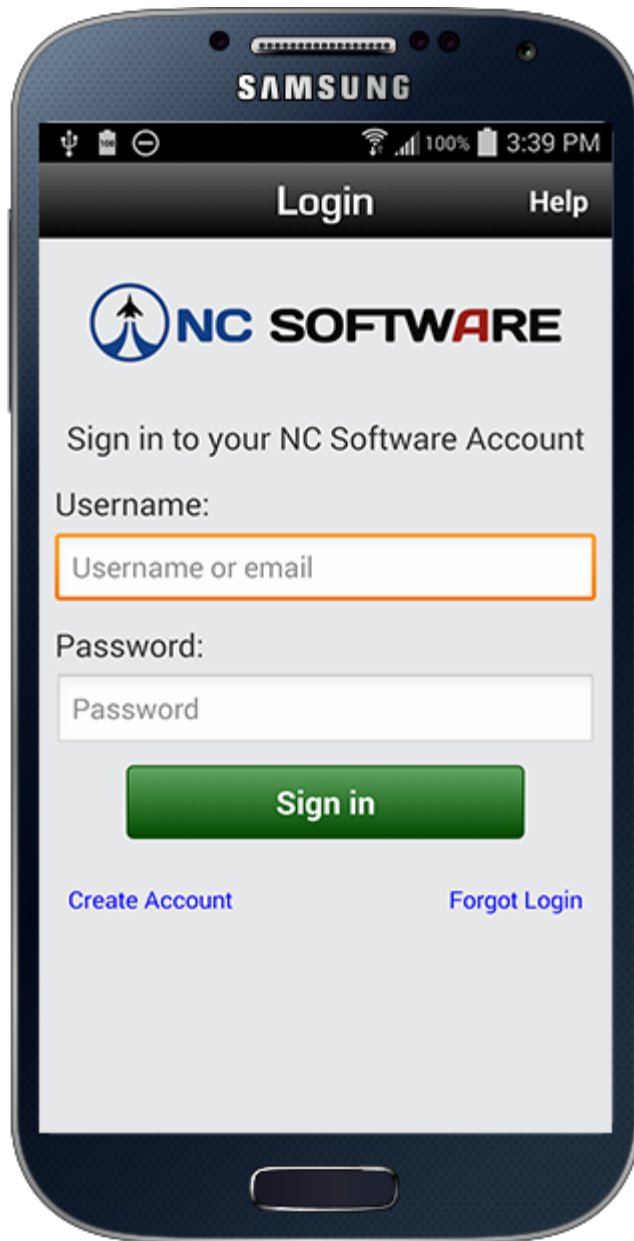
3. Logbook Pro Desktop is now connected to the cloud.

Video Demonstration

Mobile Device Initialization

If you haven't done so already, download Logbook Pro Mobile to your device from [Google Play](#) (also available on [Amazon.com](#) and [Barnes & Noble](#)).





When you first run Logbook Pro on your Android powered device you will be greeted with the end user license agreement (EULA) and then once accepted you will see a setup guide appear. You must first sign in to your NC Software account using the same account as used in Logbook Pro Desktop (above). The app will then automatically sync with the cloud and pull down your Logbook Pro configuration information and reports generated by the PC. You are now ready to start using Logbook Pro on your Android devices.

Please note that Logbook Pro Mobile is not a stand-alone logbook. The lightweight high speed and highly reliable mobile apps are designed to allow you to add new information while away from your PC and easily sync via the cloud. Reports are generated by your PC to encompass your entire logbook. DATA is one way sync from device to cloud and once synced can be purged from the device as the data is no longer necessary or used by the app.